

# The Metro Memo



VOLUME 25-30

WEEKLY NEWSLETTER FOR THE COLUMBIA METRO ROTARY CLUB

JANUARY 24, 2018

## Thank you . . .

to **Leah Christian** for providing today's invocation, leading us in the Pledge of Allegiance and for providing us with a fundraising opportunity.

to **Audrey Spieler** for greeting members and guests as they arrived at today's meeting.



Members are invited to support the Columbia Evening Rotary Club's annual wine tasting. This year's event will be held **January 29** at Grand Cru (2600 South Providence Road) from 5:15 – 6:15 p.m. Tickets are available at [www.everyeventgives.com](http://www.everyeventgives.com).

Metro's 11<sup>th</sup> Annual Trivia Night will be **February 2**. Please see page 3 of this newsletter for details.

On **February 28**, members are invited to Access Arts (1724 McAlester Street) for a fellowship activity from 7:00-9:00 p.m. For only \$5 each, members will make handmade clay bowls to raise awareness and funds to combat hunger locally. The completed bowls will be auctioned at their Empty Bowls charity event.

Nominations for RYLA attendees are now being accepted. If you know of a student currently in his/her freshman year of high school that would benefit from this leadership opportunity, please consider completing a nomination form and submitting it to **President Tom**.



During this Rotary year, clubs are being challenged to plant one tree for every member on the club roster. If you plant a tree, please let **Sarah Read** or **President Tom** know so that we can accurately track the number of trees being planted. Also, please note that Eddie Bauer has a program called the Global ReLeaf tree project. If you add \$1 to your purchase at their store, they will plant a tree in your name. Should you elect to do this, please save your receipt for Sarah or Tom to add to our records.

Members were reminded to track volunteer hours served and submit the data to **Sarah Read** for our club records.

**Joy Block** shared a letter from the Salvation Army thanking Rotarians for assisting with the 2017 Bell Ringing campaign.

### SERGEANT-AT-ARMS

Sgt. Mandy asked members to list the top four languages spoken throughout the world. Members not knowing that the answers were: 1) Mandarin; 2) Spanish; 3) English; and 4) Hindi were given the opportunity to contribute to Metro charities.



## Members with Guests

Member	Guest
Mandy Schick.....	Liz Christensen
Mandy Schick.....	Sara Hope
Jackie Walters .....	Tatha Todd
Bill Costello.....	Kevin Lee

Happy Birthday to Rotarian **Jackie Walters** on **January 30!**

Several members, and/or their family members, are facing health issues. **Barb Danuser, Jan Beckett, Tonya Wolff's** mother and **Susan Brandt's** daughter.



It was reported that **Jason Ramsey's** father-in-law recently passed away.

Please keep all these members and their respective families in your thoughts and prayers.

**Congratulations to Craig Meyer! He won a \$50 gift certificate to Sycamore Restaurant** donated by Leah Christian. We raised \$58 for Metro charities.



## In case of Inclement Weather



### REMINDER:

Metro bylaws state that if the Columbia Public Schools cancel classes due to inclement weather, Metro Rotary will not meet. Please keep this in mind as winter weather continues.

# The Metro Memo



VOLUME 25-30

WEEKLY NEWSLETTER FOR THE COLUMBIA METRO ROTARY CLUB

JANUARY 24, 2018

## THE LANGUAGE TREE IMMERSSES STUDENTS IN FOREIGN LANGUAGES

Liz Christensen is the Director of The Language Tree (TLT), which is a learning immersion program located in Columbia. TLT began in 2012 when 22 families combined their efforts to provide a learning environment where children can be immersed in learning French and Spanish. TLT serves children ages 2-10, and all activities are conducted in a second language, including lessons, games, songs, arts/crafts and snack time.



**Liz Christensen**

Children are encouraged to use the second language vocabulary in all of their activities throughout the day, and the teachers help them find the right words and structure their sentences. This is the only multi-lingual school in Columbia.

Currently, TLT serves 83 students and has a staff of 14. Combined, the staff speaks more than 10 languages, and they are from 11 different nations. All the head teachers have degrees in education specifically and/or significant experience working in Early Childhood Education environments. All the head teachers are native speakers. Assistants, as much as possible, are native speakers. Continuing education requirements must be completed each year by staff.

The benefits of a bilingual brain were noted. Research shows that bilingual people have an easier time with several key brain functions including:

- Developing strong thinking skills
- Cultivating greater cultural awareness
- Using logic
- Focusing, remembering and making decisions
- Understanding math concepts and problems
- Increasing reading comprehension

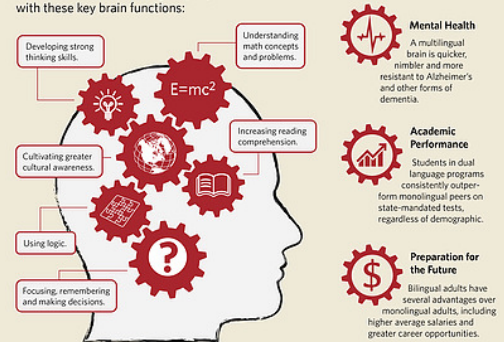
TLT is a 501(c)(3) organization that receives its revenue through tuition, fundraising and grants. Current tuition charges are not enough to cover the full cost to educate students, and fundraising covers the difference. Liz explained the efficiencies TLT has in place to help minimize the costs incurred including technology plans, volunteers, and a recycle/reuse/repurpose program. To donate, or learn more, please visit [www.thelanguagetreeimmersion.com](http://www.thelanguagetreeimmersion.com).

Benefits of a

## Bilingual Brain

Splash language immersion programs provide a unique and powerful opportunity to strengthen children's highest cognitive brain potentials through deliberate literacy development in two languages and authentic exposure to rich language experiences.

Research shows that **bilingual people** have an easier time with these key brain functions:



For more info on Splash language immersion programs, visit us online at [learn.vifprogram.com/languageimmersion](http://learn.vifprogram.com/languageimmersion)

Source: Zaback and Aronow, 2013; Kessler and Quinn, 1985; Bialystok and Majumder, as cited in Aronow and Kessler, 2013; Ellis, et al., 2010. For more info, visit [www.vifprogram.com](http://www.vifprogram.com)



## Next week . . .

PROGRAM  
Trivia Night  
Final Prep

GREETER  
Karen Brown

INVOCATION/  
RAFFLE/FUNDRAISER  
Jenny Flatt

COLUMBIA METRO ROTARY CLUB

[www.columbiametrorotary.org](http://www.columbiametrorotary.org)

CHARTERED JUNE 10, 1993

# The Metro Memo



VOLUME 25-30

WEEKLY NEWSLETTER FOR THE COLUMBIA METRO ROTARY CLUB

JANUARY 24, 2018

## 11<sup>th</sup> Annual Metro Rotary Trivia Night

- What:** Trivia night with dinner buffet catered by Sam Bennett  
Beer, soft drinks and set-ups provided and "Share the Pot" raffle
- When:** Friday, **February 2, 2018**; Doors open at 5:30 p.m.; Dinner buffet will begin at 6:00 p.m. Trivia begins at 6:45 p.m.
- Where:** Knights of Columbus Hall (2525 North Stadium Blvd.)
- Why:** Fundraiser to benefit First Chance for Children and other Metro Rotary charities
- Tickets:** \$40 per person or \$300 per table of eight (includes dinner buffet, beer, soft drinks) Share the Pot Cash Raffle Tickets: \$5 each or 3 for \$10
- Who:** All friends, business associates, family members and other Rotarians are invited to join in the fun. Trivia night tickets and raffle tickets will be available at each Metro Rotary meeting through the night of the event.



### Special thanks to our Sponsors

(Please contact **Anna Drake** if you would like to be a sponsor.)

#### EVENT SPONSOR

The Insurance Shop  
(Anna Drake)



#### TICKET SPONSOR

Rolling Hills Veterinary Hospital  
(Tom Rose)

#### FOOD SPONSORS

Huebert Builders, LLC  
(Susan Hart)

Jan & Wilson Beckett

Charlene Boyes

The Law Office of Lori Neidel  
(Lori Neidel)

#### ROUND SPONSORS

Williams-Keepers, LLC  
(Shawn Barnes)

Spectrum Health Care  
(Cale Mitchell)

Christensen Construction  
(Rob Christensen)

Joy Block

Sarah Read

Columbia Insurance Group